



## **Sélections FFCO pour EYOC et JWOC**

**27 et 28 avril 2024**

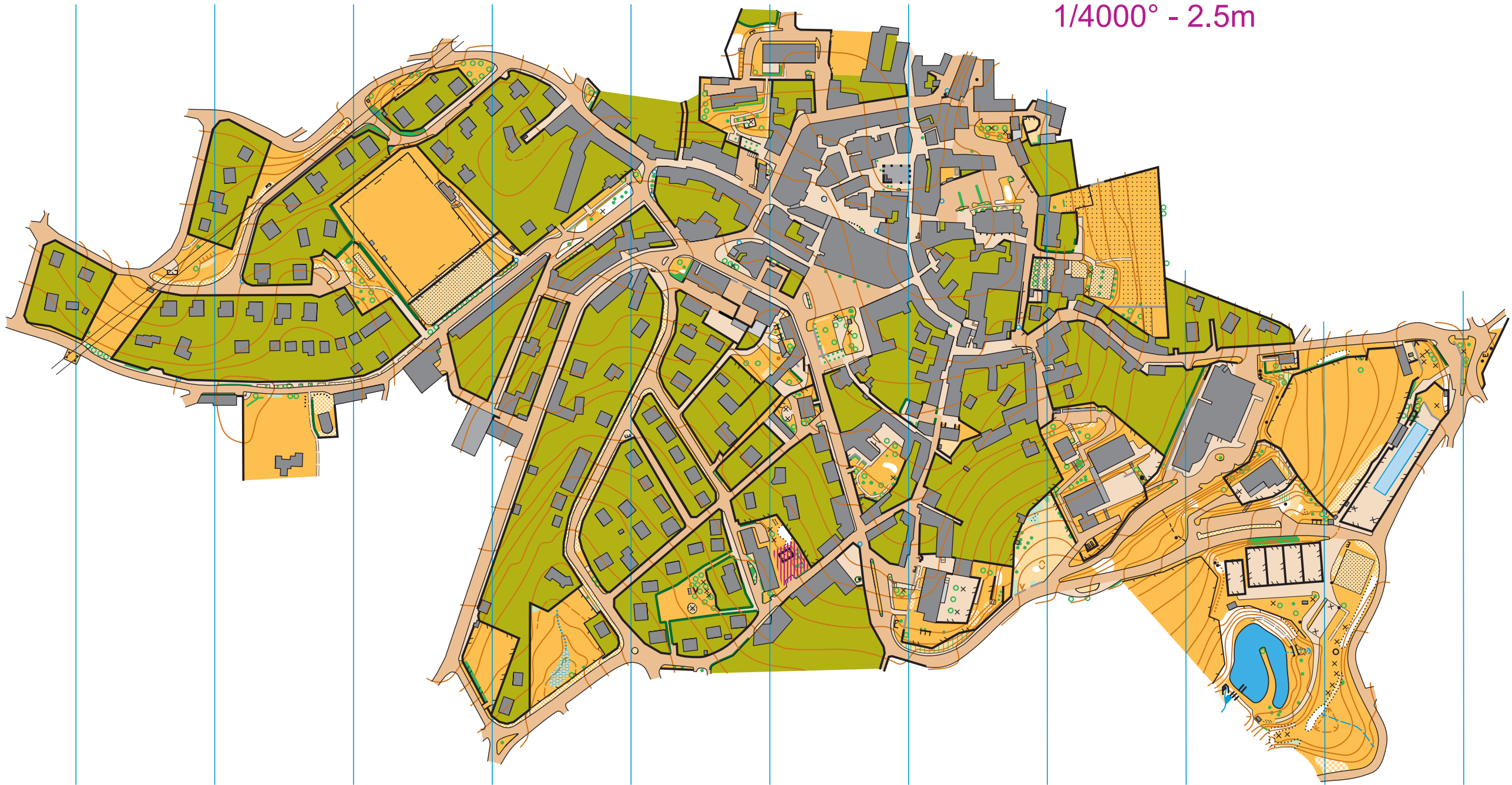
### **Terrains gelés**

Les périmètres définis par les contours des cartes existantes fournies ci-dessous sont interdits à toute personne voulant participer aux sélections ou en lien avec des participants potentiels.

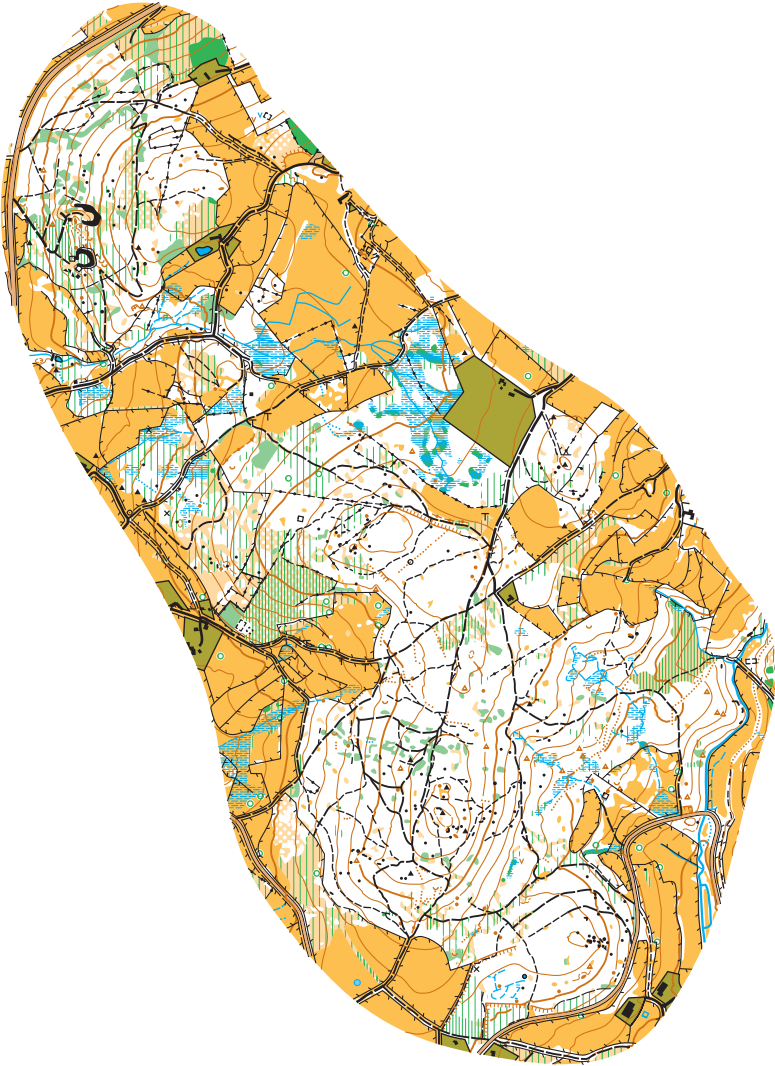
1. Sprint à Saint - Didier - en - Velay (43)
2. Moyenne Distance sur les communes de Saint - Régis - du – Coin et Marlhes (42)
3. Longue distance au col des limites (42)

Saint-Didier-en-Velay

1/4000° - 2.5m



# Moyenne distance



# Col des Limites 2023

## 1: 10 000, E = 5 m

Made by: Adamna s.r.o.  
Jundrov 570, Brno  
Czech Republic  
firma@adamna.cz  
www.adamna.eu

Surveyed: August 2023

Mapped by: Bob Haj  
Adam Chromy  
Matej Klusacek  
Simon Marecek  
Petr Marecek  
Jan Potstejnsky  
Jiri Racansky

Revised: Adam Chromy

Head mapper: Adam Chromy

Total area: 4.73 km<sup>2</sup>

Basemap: IR orthophoto, GPS, lidar, MNT  
preprocessed by Adamna s.r.o.

Compatibility: ISOM 2017-2, revision 5 (09/2022)

Special symbols: × Large significant rootstock  
• Single tree  
○ Large significant tree  
▲ Charcoal burning ground  
× Other man-made object

Each time when this map is published, please place on the map following:

- 1) Exactly this text:  
"RELEVÉS et DESSIN: Adamna s.r.o. (www.adamna.eu)" or  
"RELEVÉS et DESSIN: Adamna s.r.o. (www.adamna.eu); B. Haj, A. Chromy, M. Klusacek, S. Marecek,  
P. Marecek, J. Potstejnsky, J. Racansky".  
(!) Please DO NOT write only names without company name and the website address.
- 2) Place on the map this logo. It can be enlarged as you want (right click+Enlarge/Reduce).



When map is printed for a training, purposes, the logo of Adamna is enough:-)

Thank you very much.

